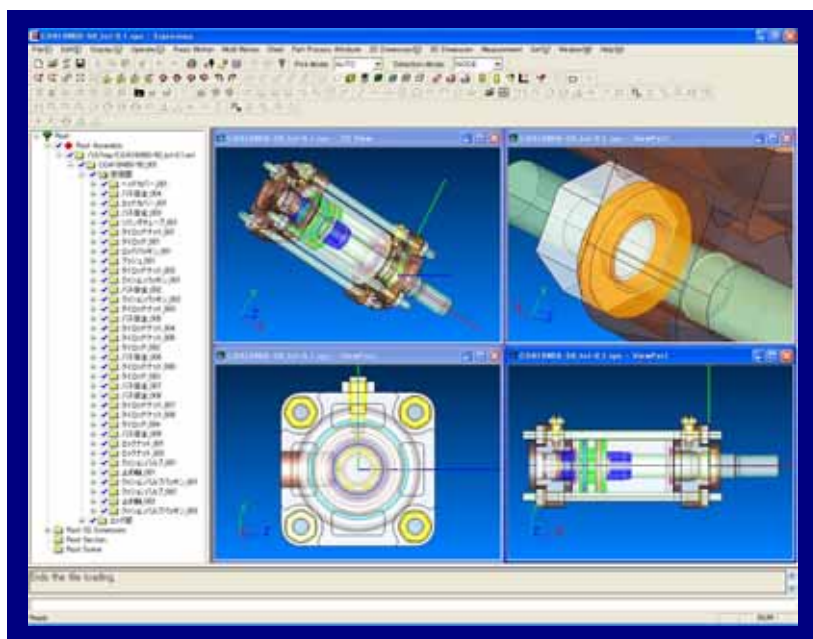


— Here comes everything for design and manufacture. —

Expressus holds 3-dimensional information and 2-dimensional information, such as a sectional view, seamlessly required for design or manufacture.



Realization of easy operation and visibility

Necessary function for communicating the design intention highly is mounted

Digital Mock-up

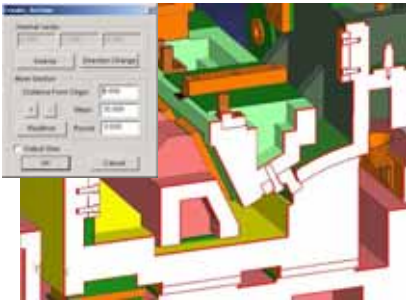
Indispensable mechanism simulation for a design and manufacture

Real Time Communication wherever designers are

Correspondence to CAD over the world

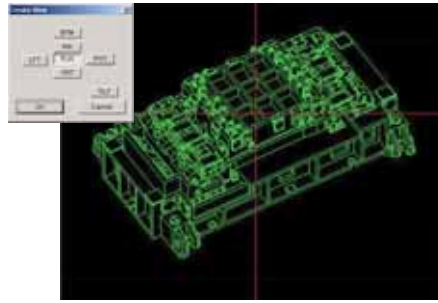
# Specifications

## Section creation



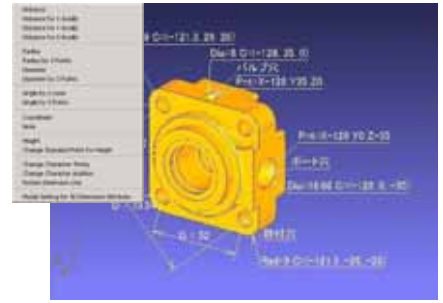
Section creation in arbitrary positions and a direction is possible. A section is stored with a name. Changing a position of the section is possible. Section ON/OFF is performed on a tree view.

## View creation



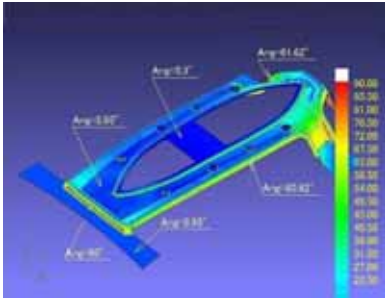
Plane view, side view, front view, top view and rear view. Creation of the isometric drawing in the view state at the directions time is possible.

## 3D dimension



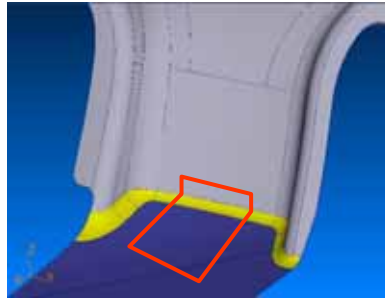
Distance, X-axis distance, Y-axis distance and Z-axis distance dimensions. Radius, 3-point radius, diameter and 3-point diameter dimensions. 2-line angle, 3-point angular, coordinates value and height dimensions and annotation.

## Inclination measurement



The angle at each position of shape with a standard vector is displayed by the color simultaneously with the command function. The incline angle at the cursor position is in real time displayed. The incline dimension can be made as 3D dimension.

## Project curve creation



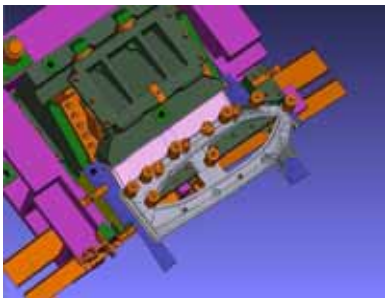
The point that was picked on the curved surface is connected and the project curve is made. It is possible to express images, such as a trim line and a parting line, on a 3D figure

## 2D dimension



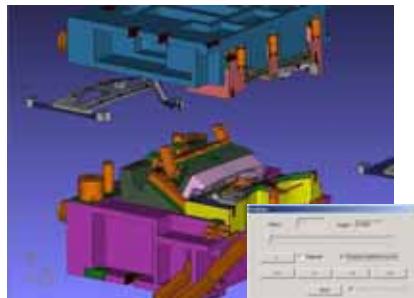
Orthogonal, parallel, radius and diameter dimensions. Angle, coordinates value dimensions and notes. Hatching (automatic area recognition)

## Scene function



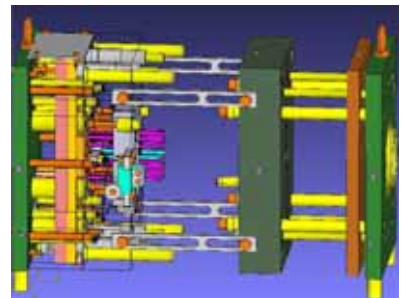
The direction of a view in the time of doing a capture and a display ON/OFF state is stored with a name. When reappearing by specifying a scene from a tree view, the state at the capture time reappears. A situation can be informed exactly.

## Press motion function



Pad, lower blank holder, upper blank holder, lifter, and pre-holding push pin. Retractable gauge and slide type gauge Ground cam, flying cam, ground type double cam and collapse. Common rail transfer device and crossbar transfer device.

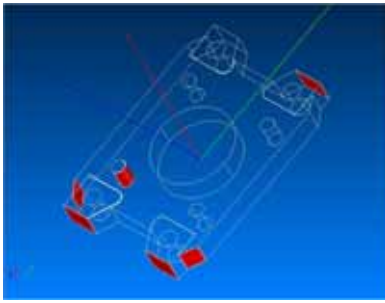
## Mold motion function



Runner stripper plate, slide core, slide cavity, angular pin, and link angular pin.

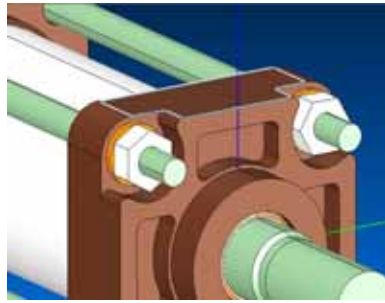
# Specifications

## Model comparison



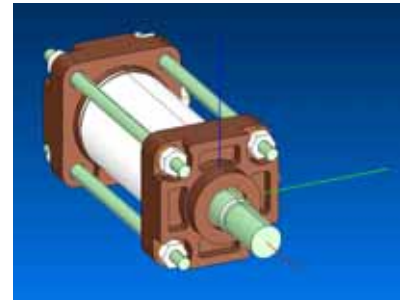
Geometry comparison of two models can be performed. The part below a tolerance is searched and a color display is performed. This function is an effective at the time of design change of a product model etc.

## Element selection by color



It is the function which changes the element or node near the specified element color into a selection state. The selected node and the selected element can be treated like what was chosen by other methods, such as region selection, and can be used for various uses, such as topological operation, and node change, color change.

## Coordinate System



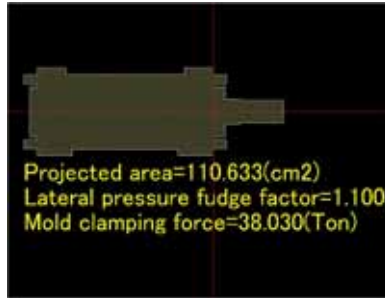
Change the current coordinate system, Define by 3 points, Define by 2 lines, Move the point of origin, Move parallel, Initialize. Only one coordinate system can be defined in each node.

## Topological Operation



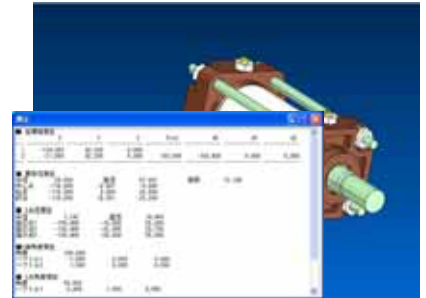
Initialize, Move by 2 points, Align Posture, Revolute by 3 points, Revolute around axis, Move by distance, Move in a plane. Parallel translation, rotation movement, etc. is possible to the specified arbitrary nodes and the element belongs to it.

## Projected area calculation



This command can get a result of projected area by indicating any project direction. Also, mold clamping force calculation by indicating lateral pressure fudge factor, cavity inside face pressure and safety factor is available as a option.

## Measurement commands



The measurement commands can get the result faster than dimension commands. The results will be output to the text box, so, they can be used with cut and paste operation.

## Viewing operation

There are a method of performing by mouse operation and the method of performing by operation of a control key. Change of a view and 90-degree rotation can be performed by menu selection.

## Display mode

An element attribute dependence display mode, a semi-translucence mode, an opacity mode, and wire frame mode and the sketch mode.

## Attribute Display Mode

A hole attribute mode, a pocket attribute mode and a pocket-section type attribute mode.

## Part attribute

Inputs part attribute information on CAD. Addition and edit function of part attribute information. Display of list of part attribute information. Outputs the part attribute information to CSV file.

## Hole- processing attribute

Inputs hole- processing attribute information on CAD. Addition and edit function of hole-processing attribute information. Display of list of hole- processing attribute information. The hole shape can be confirmed in the hole- processing attribute display mode. Outputs the hole-processing attribute information to CSV file. Outputs simple hole-processing NC data.

## Pocket-processing attribute

Inputs pocket- processing attribute information on CAD. Addition and edit function of pocket- processing attribute information. Display of list of hole- processing attribute information. In pocket-processing attribute display mode, a pocket group and pocket surface type can be discriminated by the color.

# Specifications

## Real Time Communication

Multi-engineer can communicate about design in the session all together through the expressus.net in a remote environment.

You can get enough response even in the narrow band environment.



- You don't need the own server, need only to connect expressus.net.
  - It corresponds to HTTP/SOCKS4/SOCKS5 proxy-server.
  - All the messages are enciphered.
  - It shows the presence of members all the time.
- It supports communication which the engineers need.
  - You can share the various functions with the members who are participating in the session.
  - All the operation is shown to all the session members in real time.
  - As only information on the operation is transmitted, you can get enough response even in the narrow band environment.
  - You can review design and manufacture with changing 3D model port and 2D drafting port.
  - You can easily give and take the operation right.
  - Each session member can point on the screen and it's shown to everyone.
  - As the operated messages are queued at the server, you can join the session even at the middle
- You can hand over the files through the secure file sharing.
  - You can upload the file in the server.
  - You can show the uploaded file to certain member.
  - Notice service makes you possible to know when the file was downloaded.
- You can chat with text messages .

### Operating Environment

Operating System	WindowsXP,Windows2000
Memory	512MB
Supported Format	
Standard Input Format	VRML1, VRML2, IGES, STEP, STL, DXF
Optional Input Format	CATIA V4, CATIA V5, Pro/ENGINEER, Unigraphics, ACIS, Parasolid, Solidworks, SolidEdge, VDA
Output Format	XPS ( Expressus external file ) , DXF ( Section and view )

### ComApplix, Inc. / Computips, Inc.

Otemae Hio-bldg. 202, 1-4-3 Tanimachi Chuou-ku,  
 Osaka, 540-0012 Japan  
 TEL: +81-6-4790-3790 FAX: +81-6-4790-3777  
 E-mail: info@comapplix.co.jp  
 URL: http://www.comapplix.co.jp